

FRISCO MEDIANS AND ROUNDABOUTS CONCEPTUAL DESIGN

June 25, 2019



INTRODUCTION

- CDOT plans to complete the “GAP” project along Highway 9 to add an extra travel lane from the intersection with Main Street to just past Recreation Way at the Peninsula and Hospital Intersection. The entire stretch of proposed improvements are just over 1 mile long.
 - Proposed improvements to be completed in 2020 and 2021
 - Improvements include a raised, divided median
 - Two roundabouts, one at Peak One Drive at the County Commons and Water Dance, and a second at 8th Ave
- CDOT standard treatment for the Medians and Roundabouts will be unirrigigated, native seed.
- Per Council direction in early 2019, Town Staff has been working with Norris Design to explore options for improvement within the medians and roundabouts through conceptual design.



GOALS:

- Reflect Frisco's brand by creating a cohesive design for Highway 9
 - Medians
 - Roundabouts
 - Parks
- Improve pedestrian experience
- Highway 9 improvements to be integrated with Main Street streetscape



PHASE 1 GOALS:

- Signify entrance into Frisco using:
 - Primarily hardscape
 - Minimal irrigation
 - Limit lighting
- Safe pedestrian crossing via underpass
 - Possible opportunity for public art

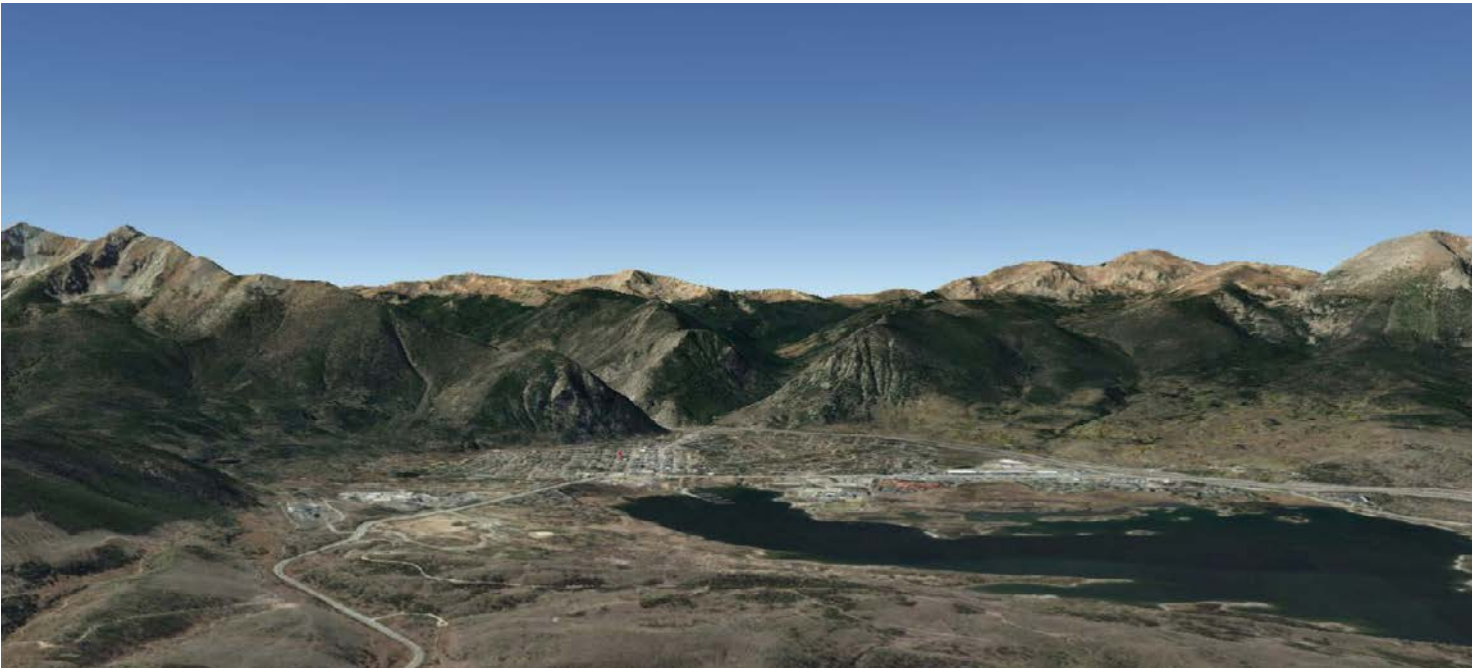
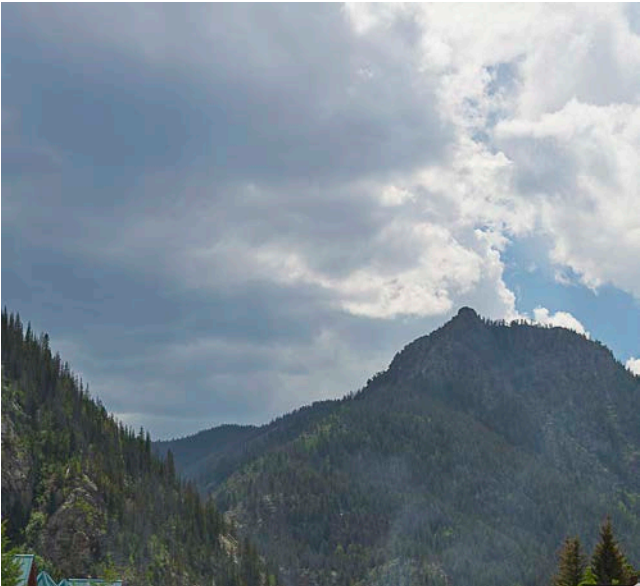


PHASE 2 GOALS:

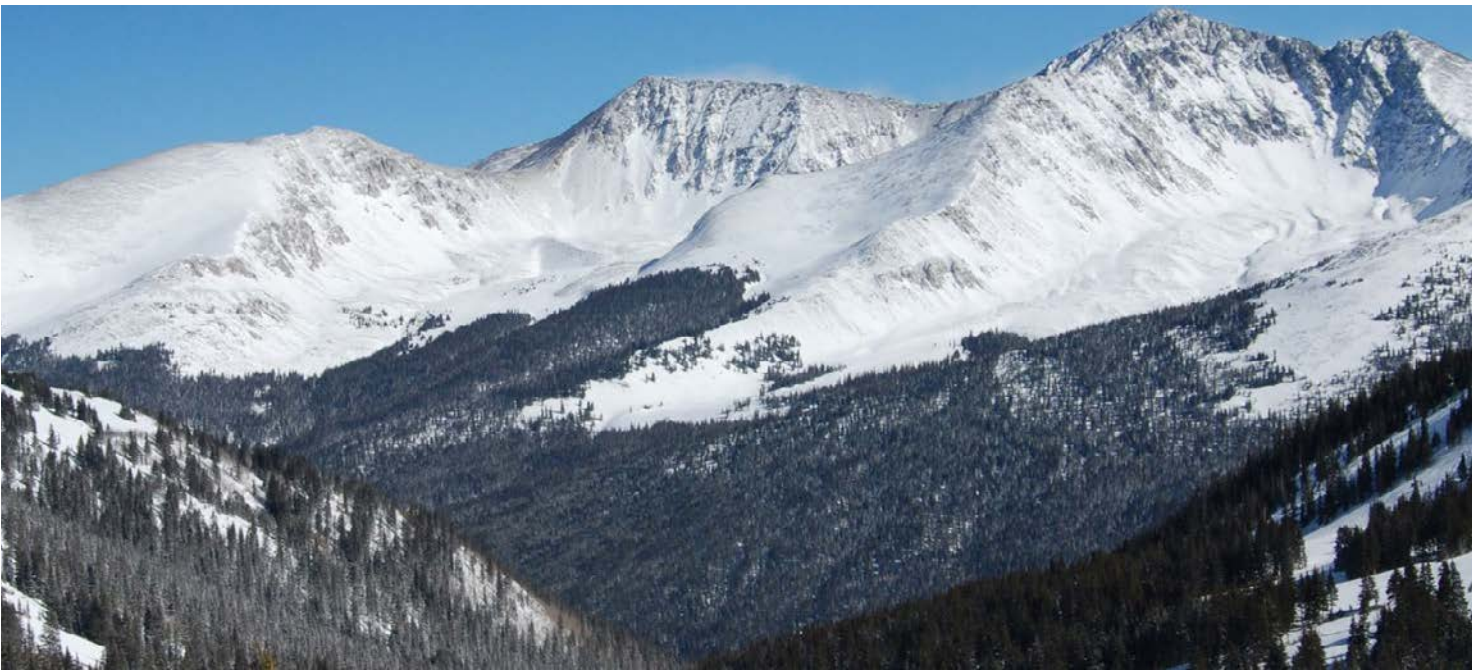
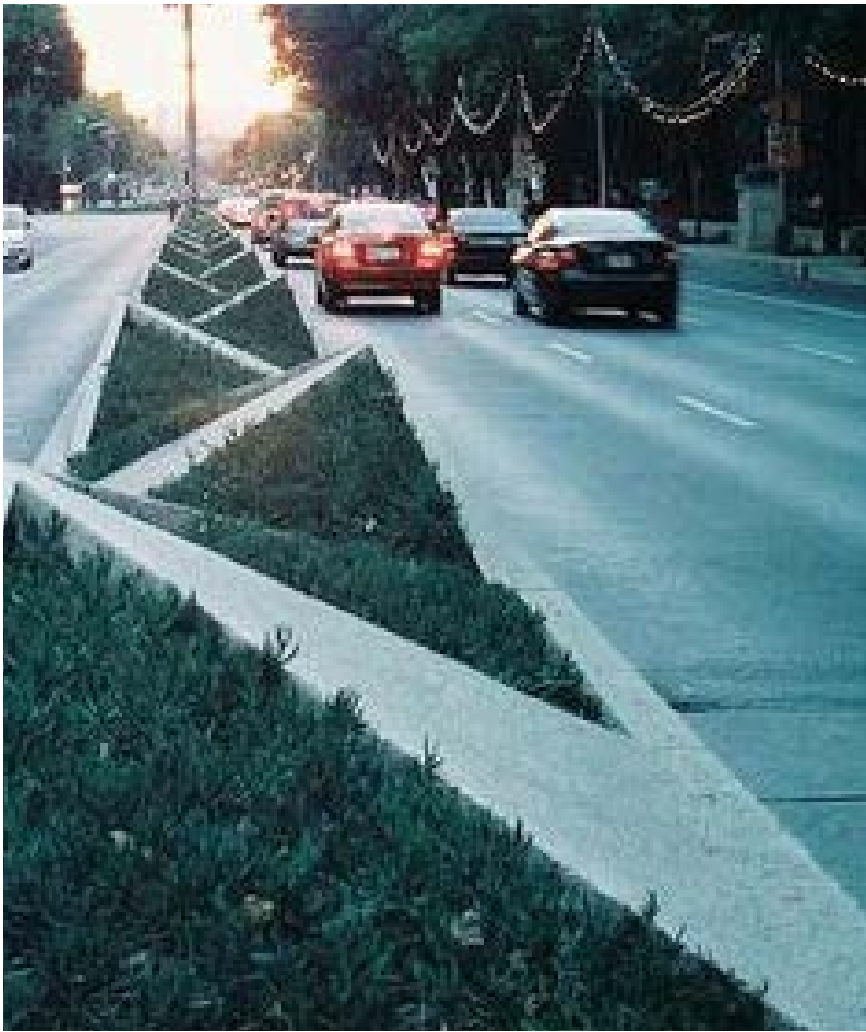
- Live plant material in roundabouts
- Locate public art in areas that encourage interaction
- Improve park spaces along corridor



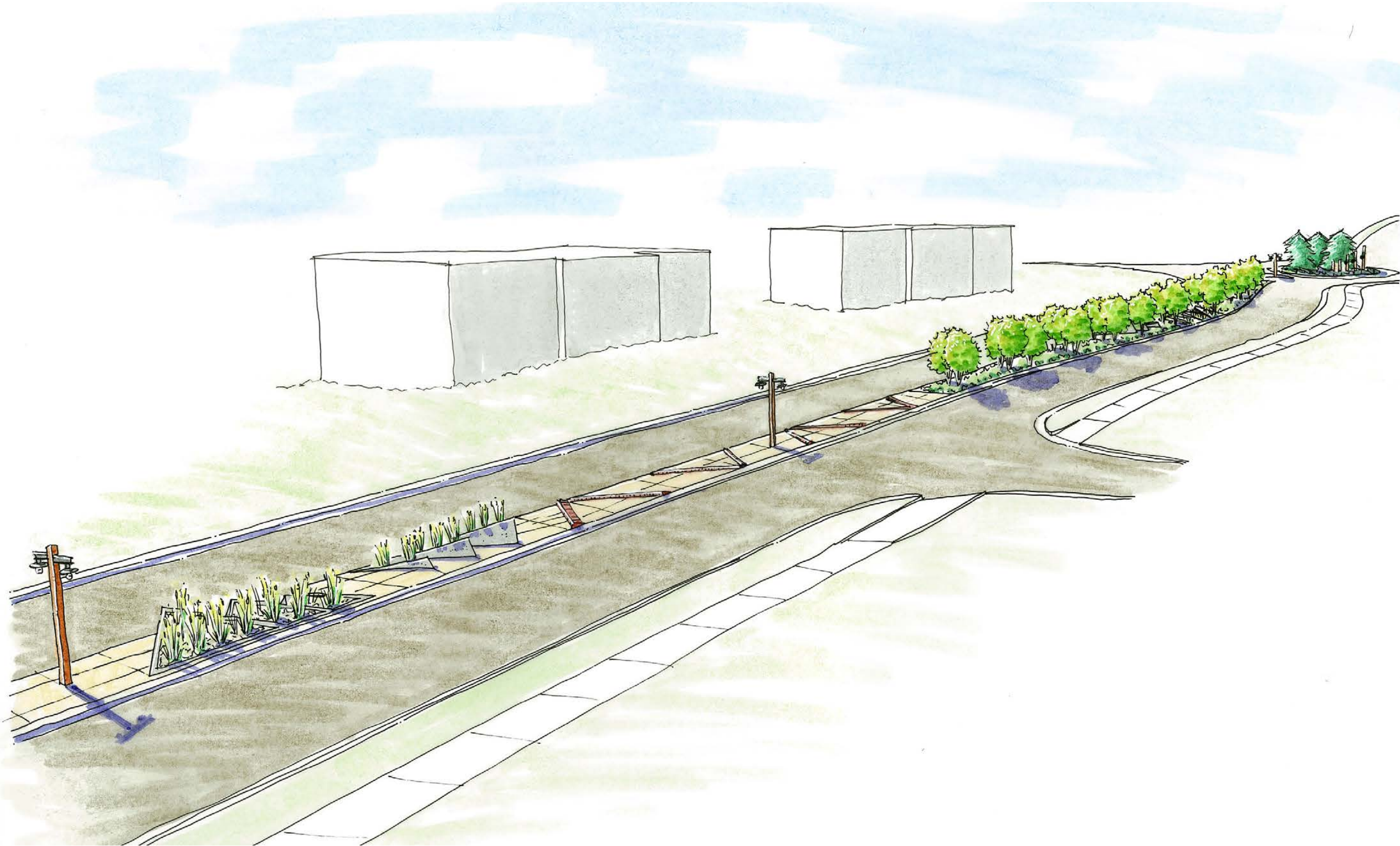
INSPIRATION



MOUNTAIN THEME: INSPIRATION



MOUNTAIN THEME: OVERALL



MOUNTAIN THEME: IRRIGATED



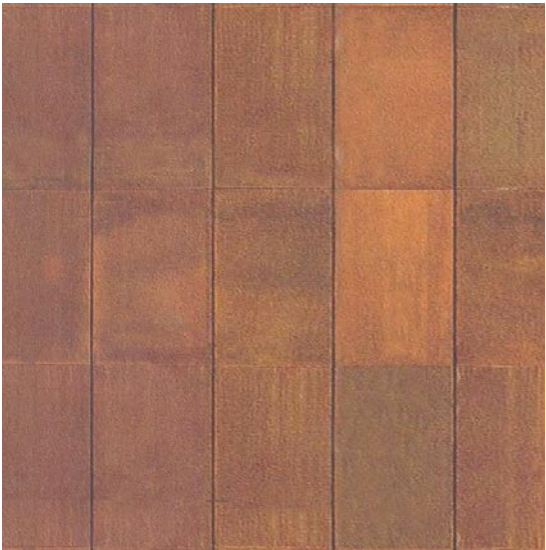
Perennials & Grasses



Xeric Plantings



Standard Gray Concrete

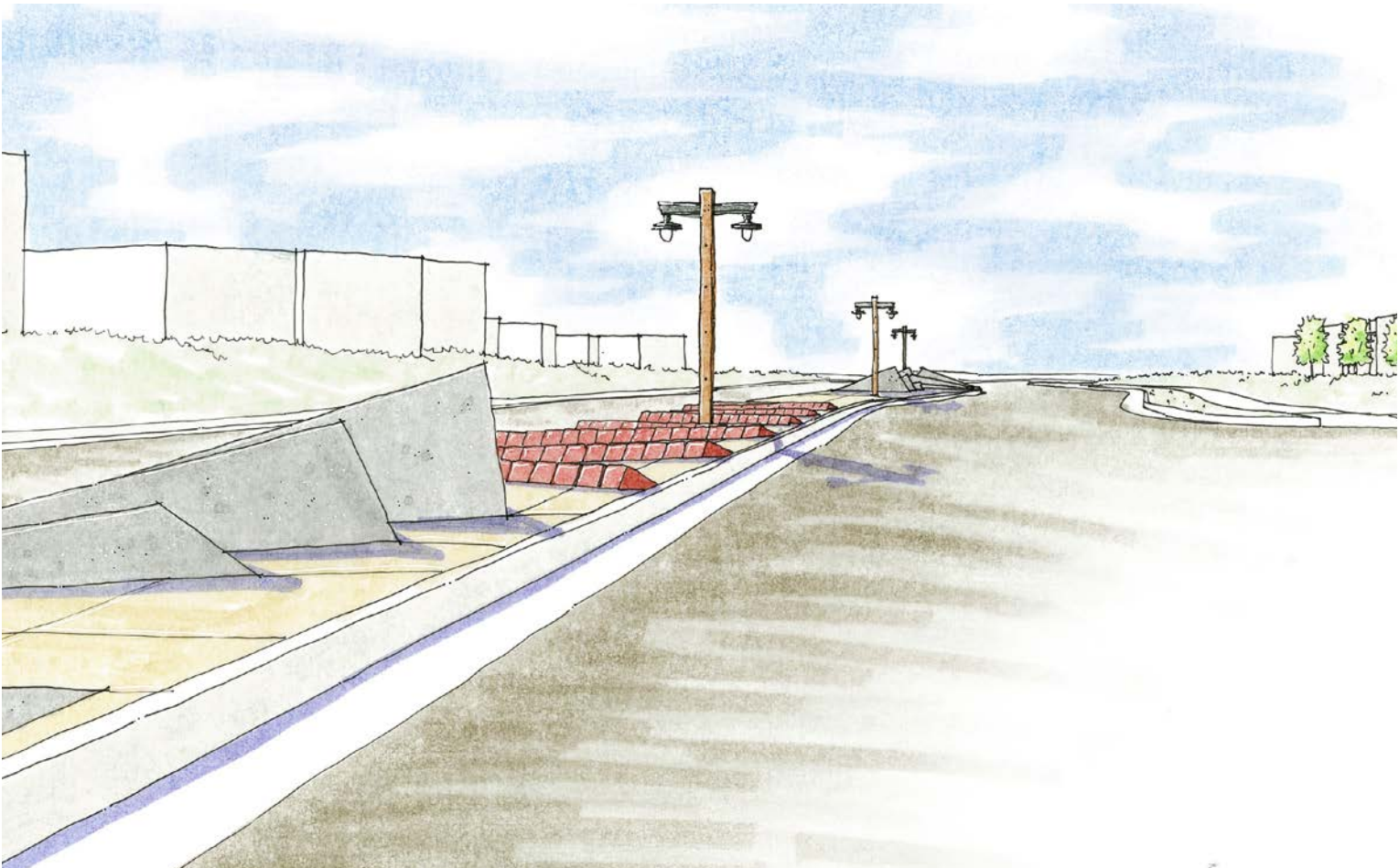
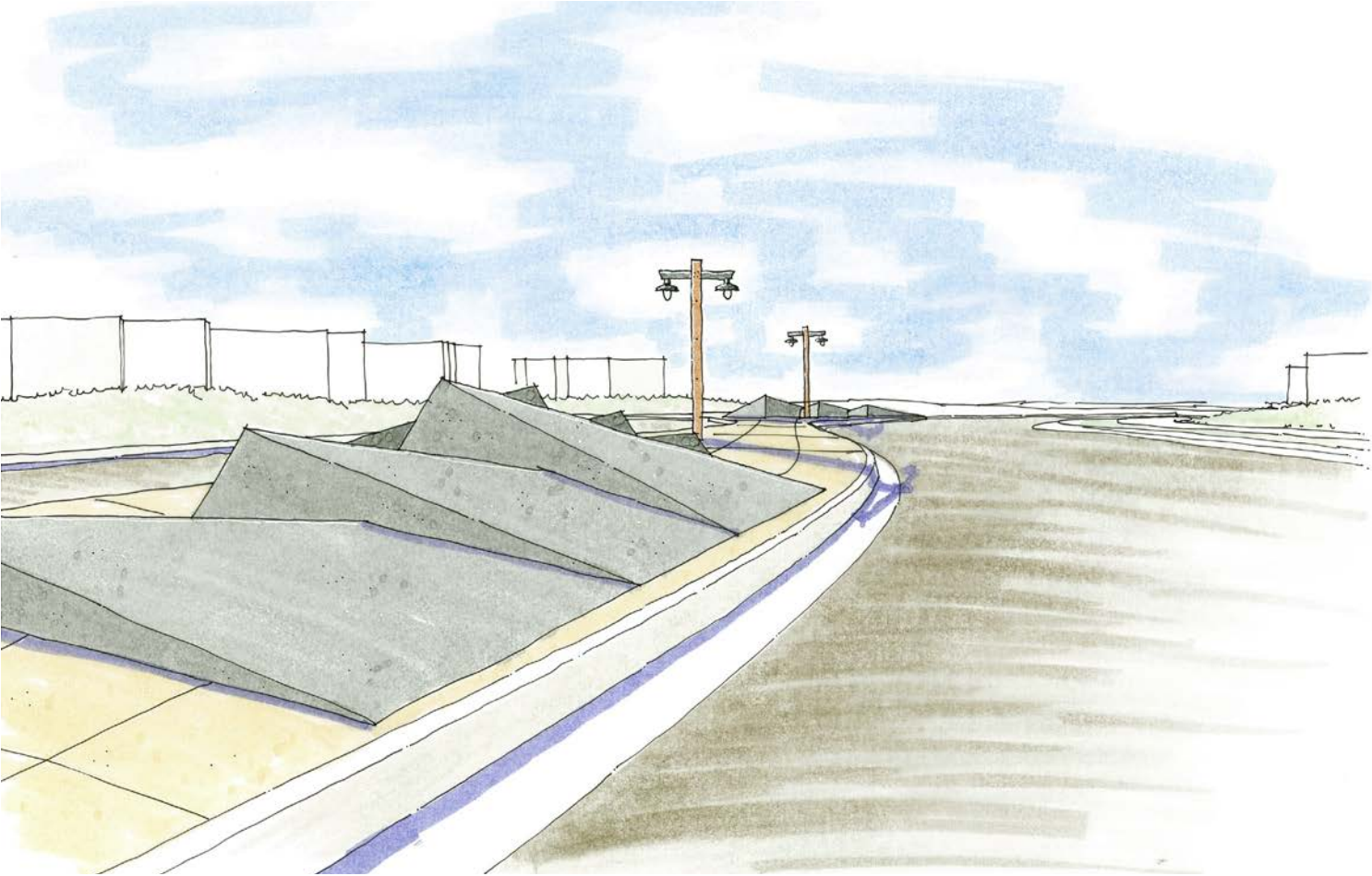


Corten Steel



Brick Relief

MOUNTAIN THEME: NON-IRRIGATED



**Standard Gray
Concrete**

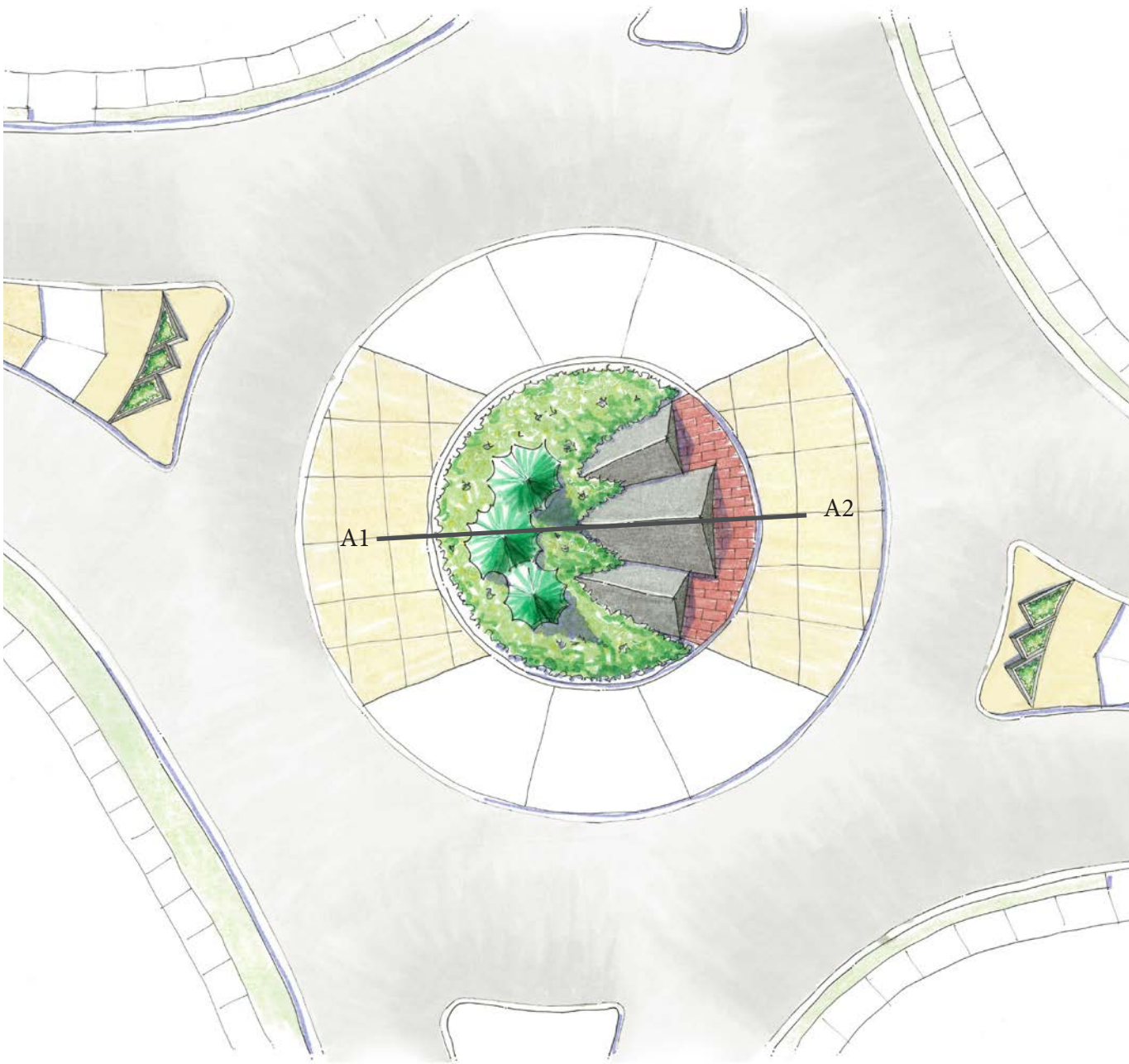


Corten Steel



Brick Relief

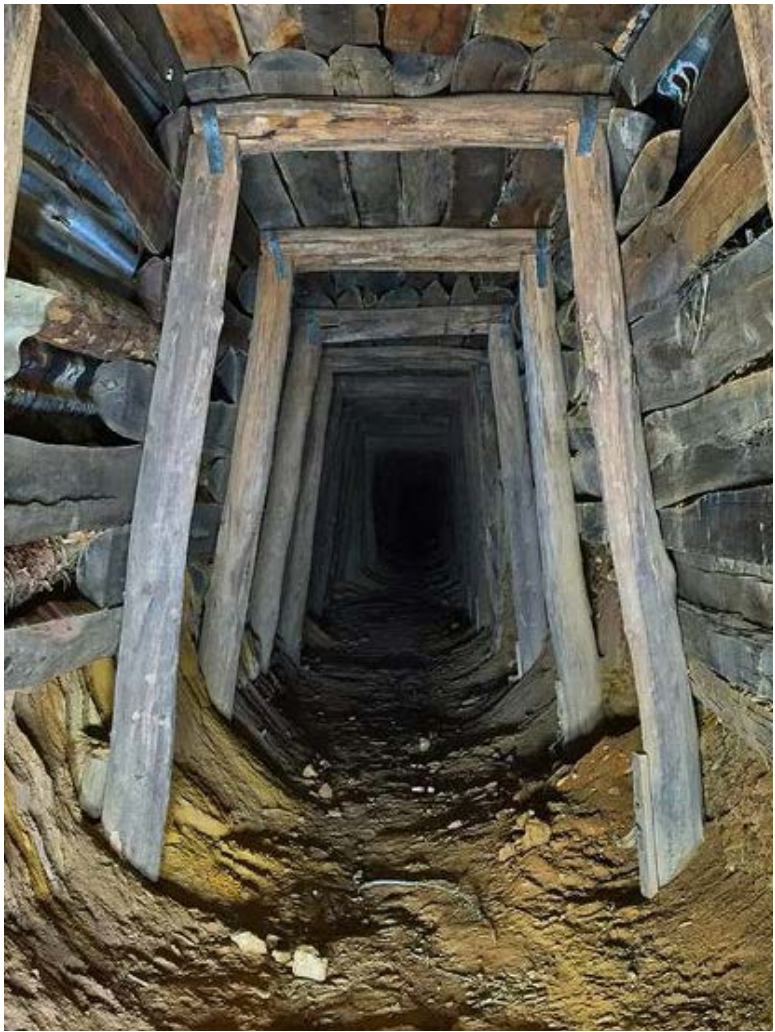
MOUNTAIN THEME: ROUNDABOUT



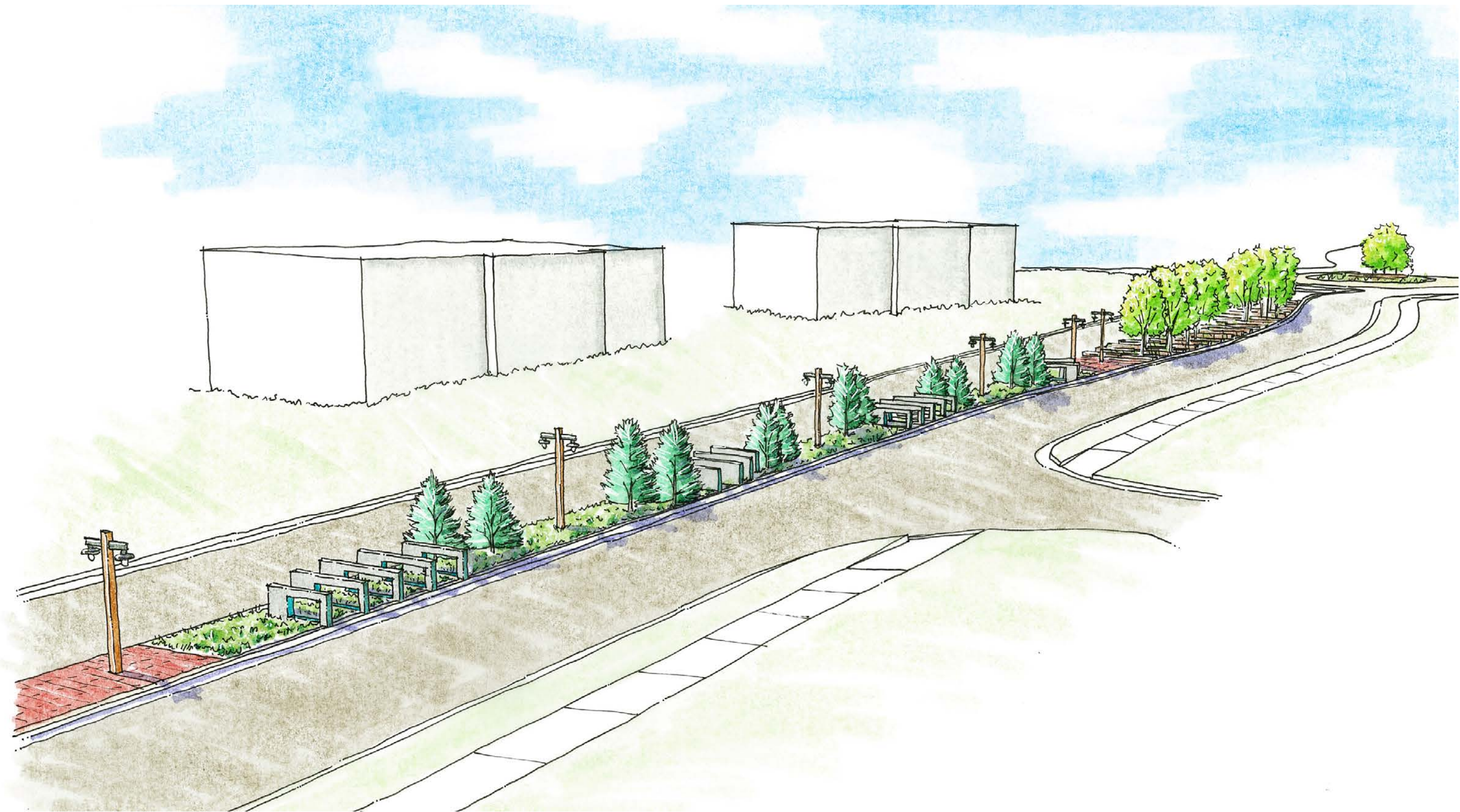
MOUNTAIN THEME: OVERALL PATTERN



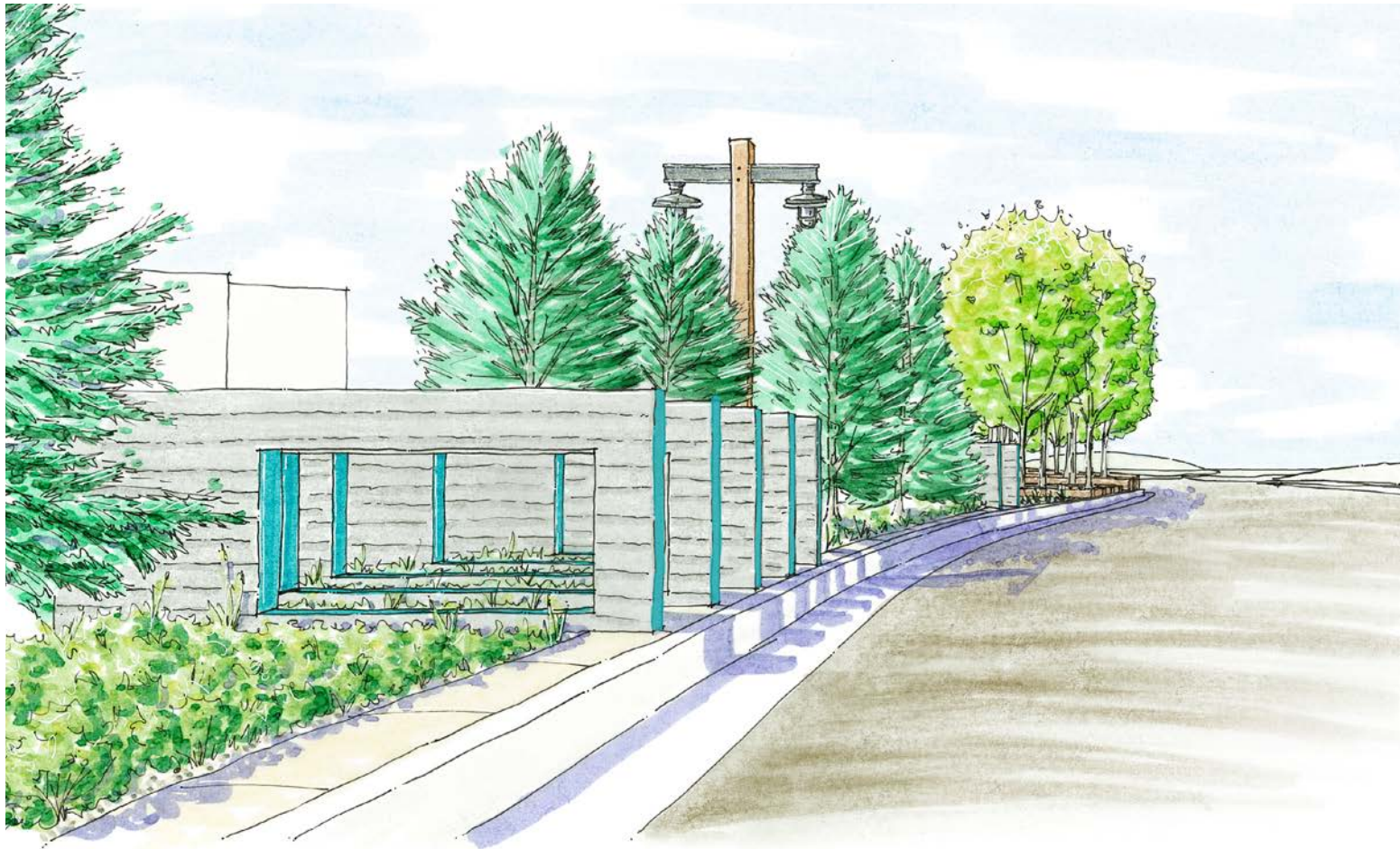
FRISCO HERITAGE THEME: INSPIRATION



FRISCO HERITAGE THEME: OVERALL



FRISCO HERITAGE THEME: IRRIGATED



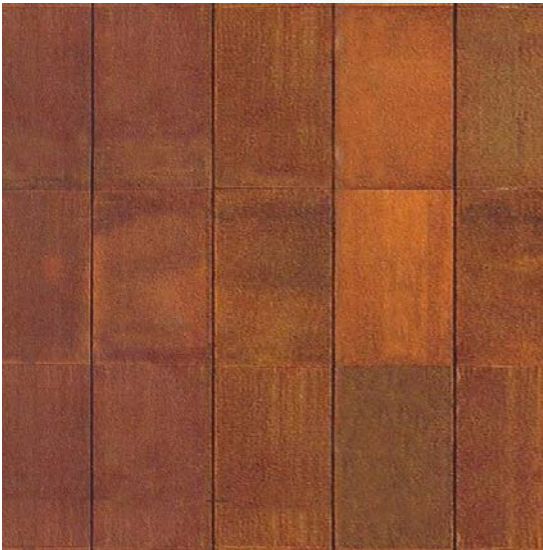
**Board Form
Concrete**



**Brick
Transition**



**Farmer's
Brown Stone
Beam**

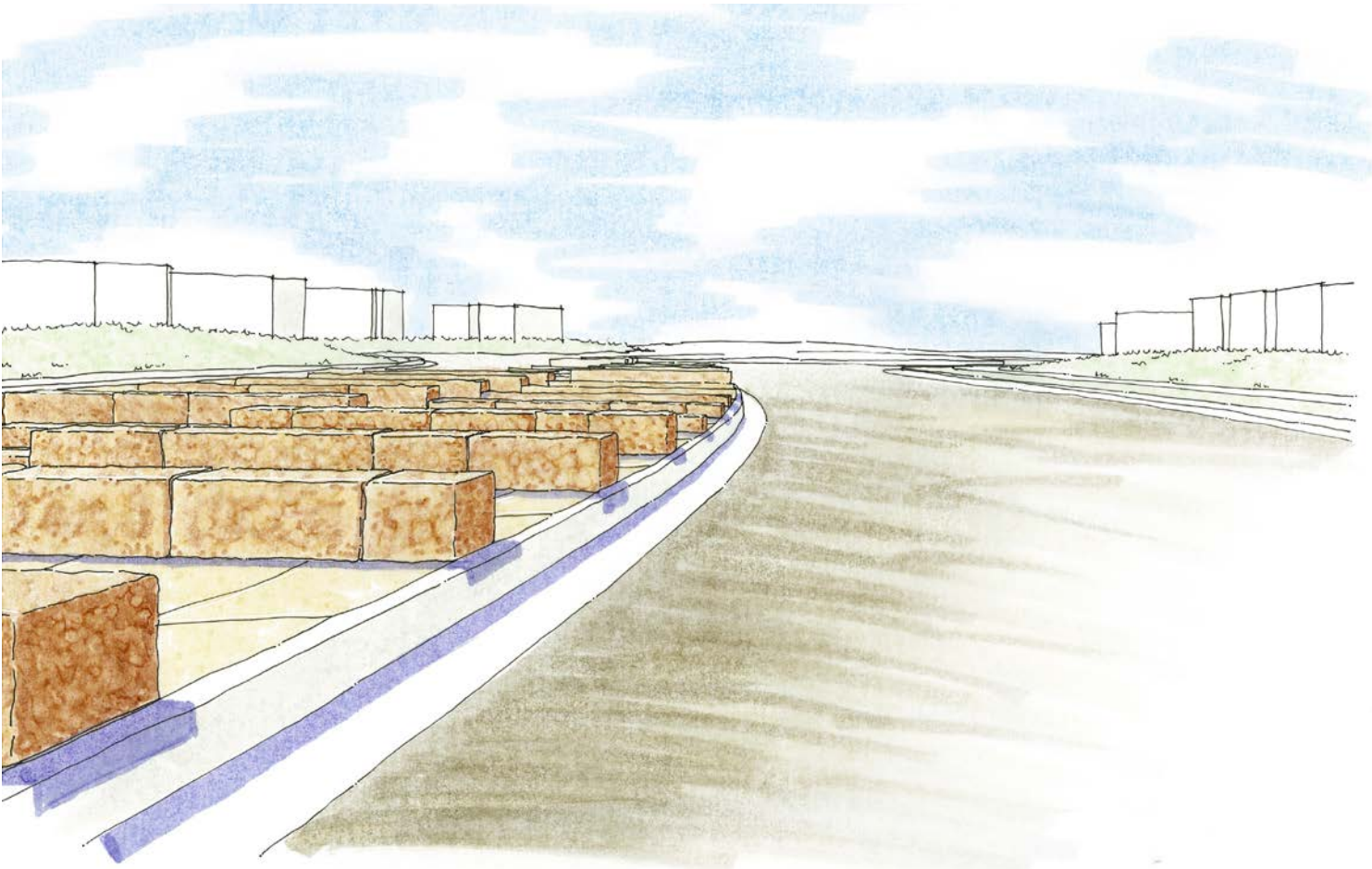
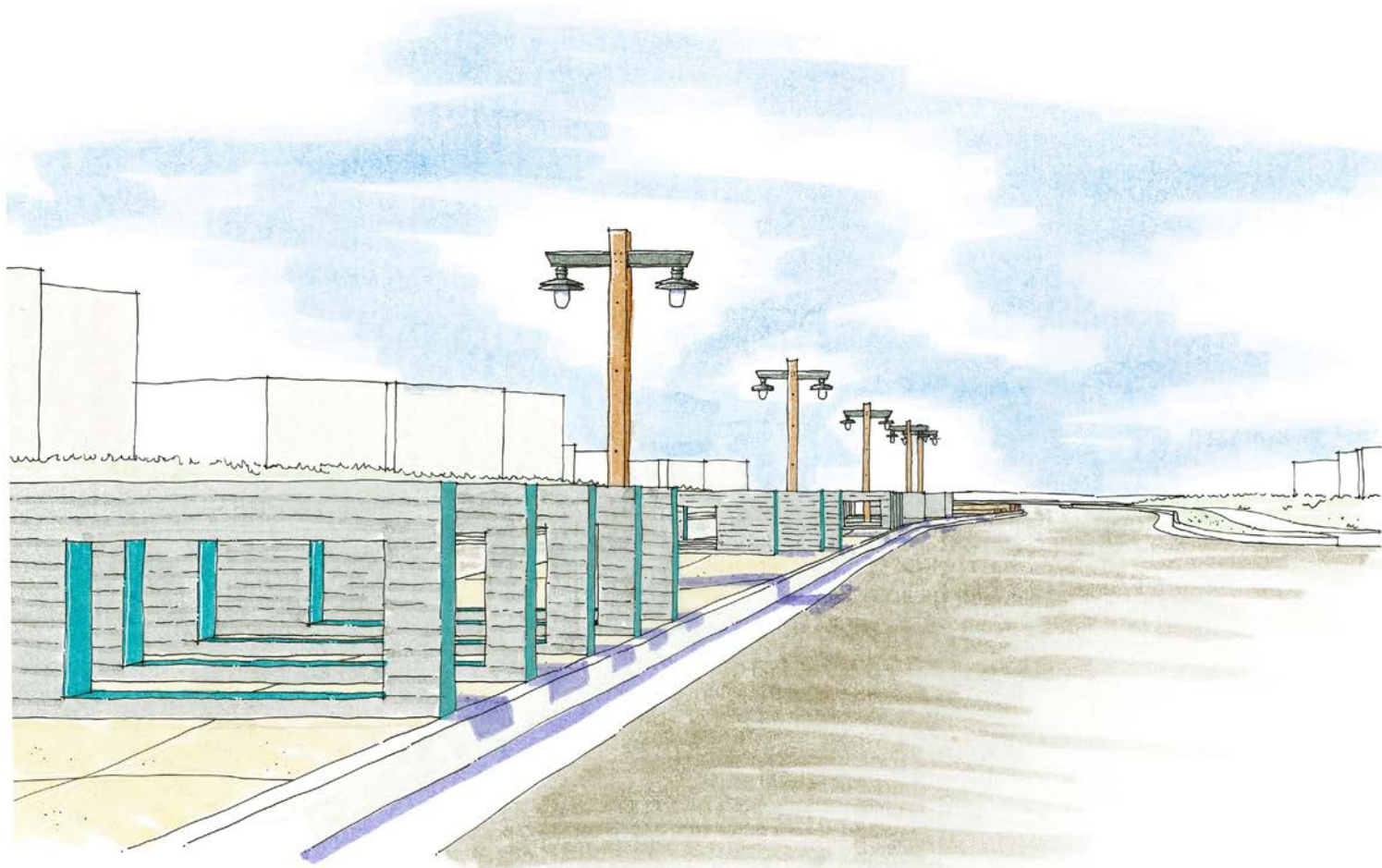


Corten Steel



**False Front Facade
Colors**

FRISCO HERITAGE THEME: NON-IRRIGATED



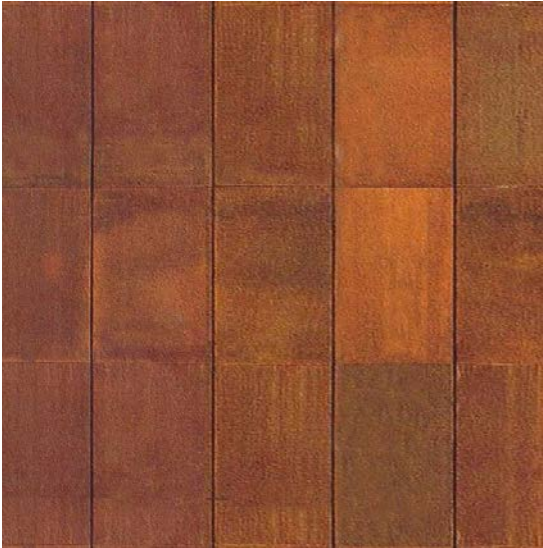
**Board Form
Concrete**



**Brick
Transition**



**Farmer's
Brown Stone
Beam**

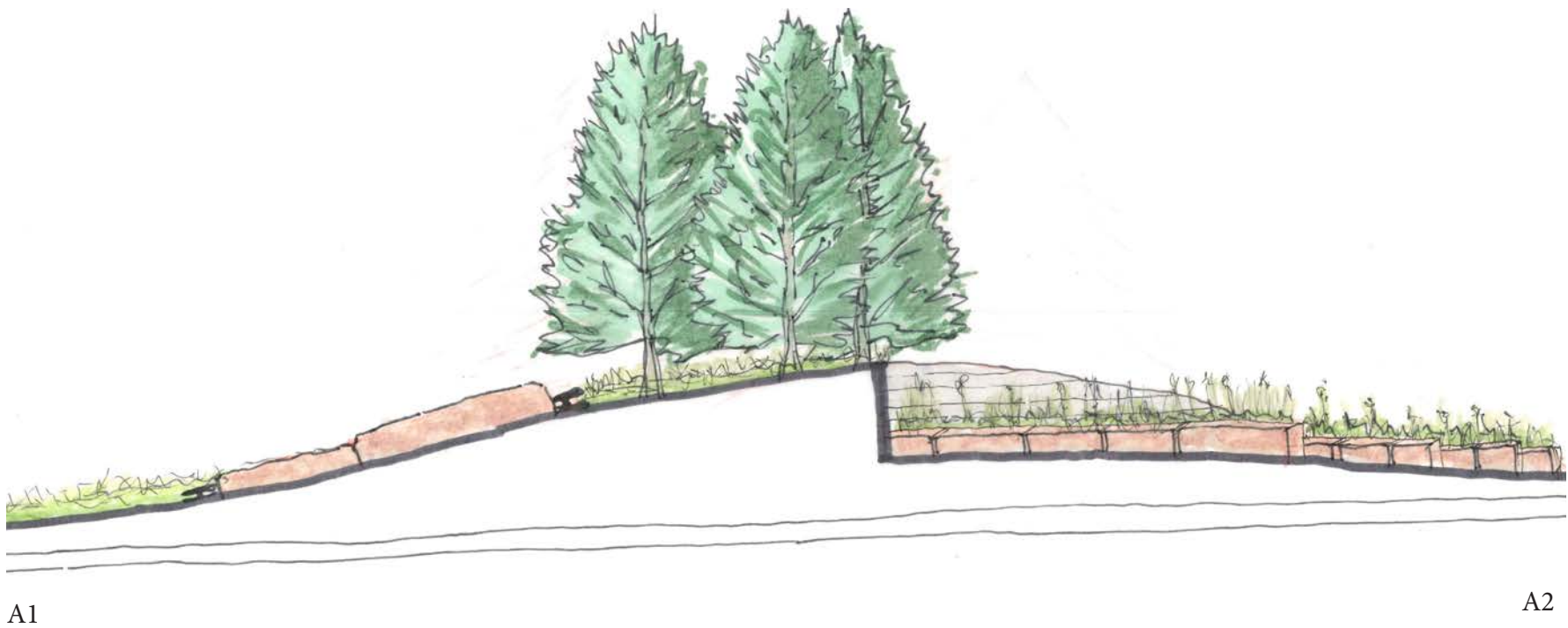
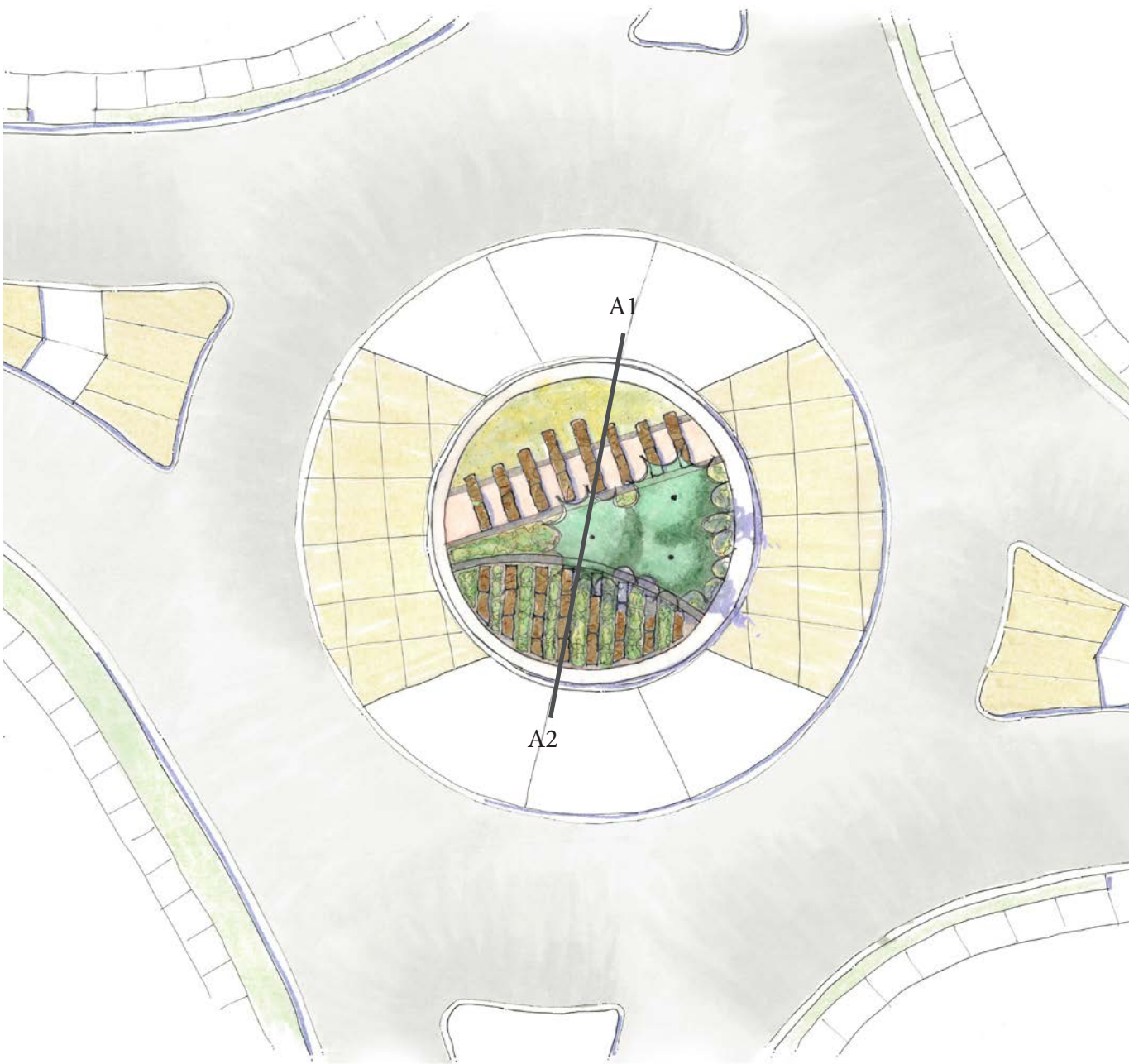


Corten Steel



**False Front Facade
Colors**

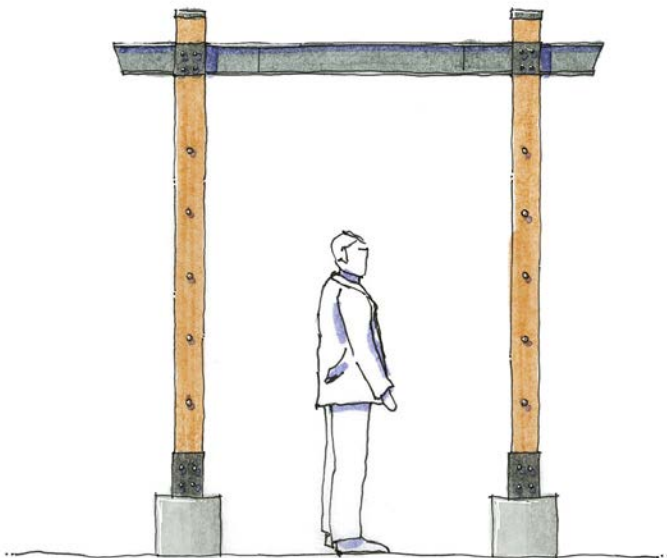
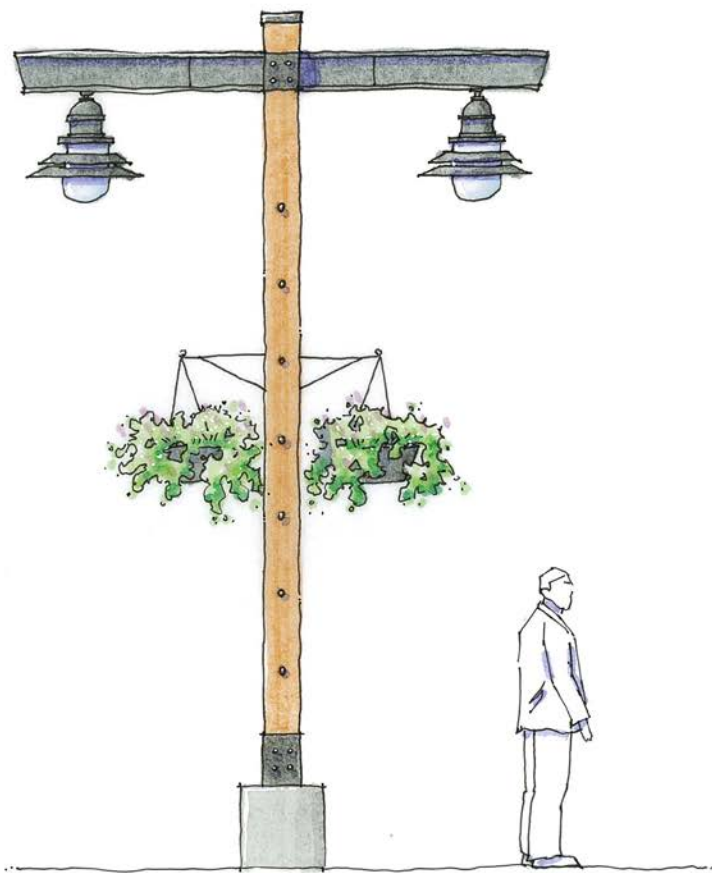
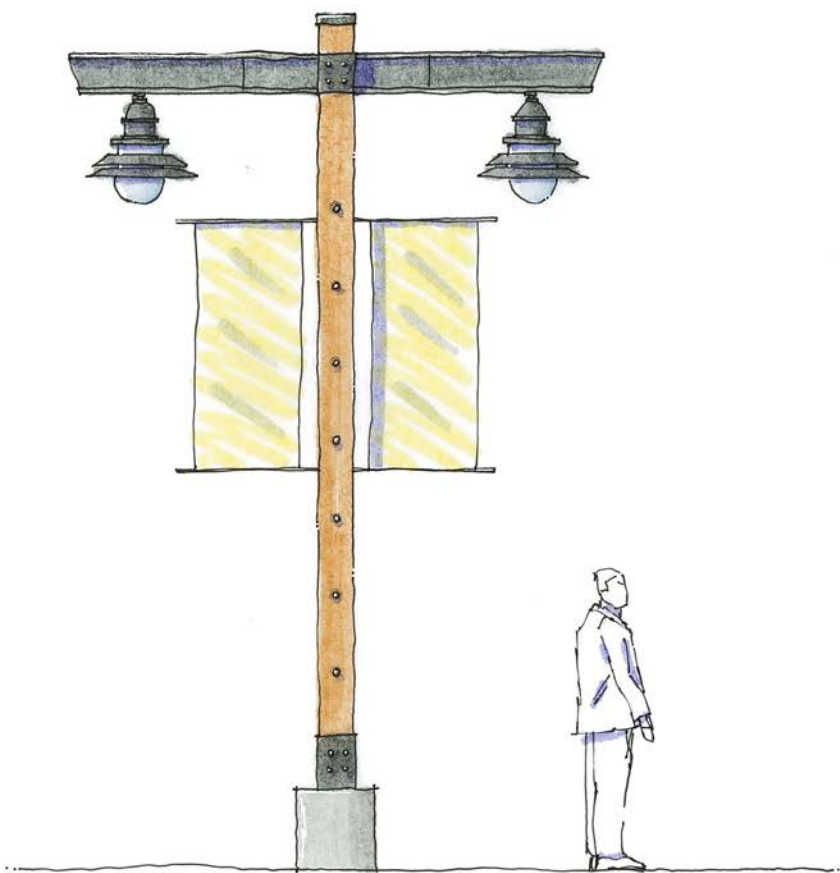
FRISCO HERITAGE THEME: ROUNDABOUT



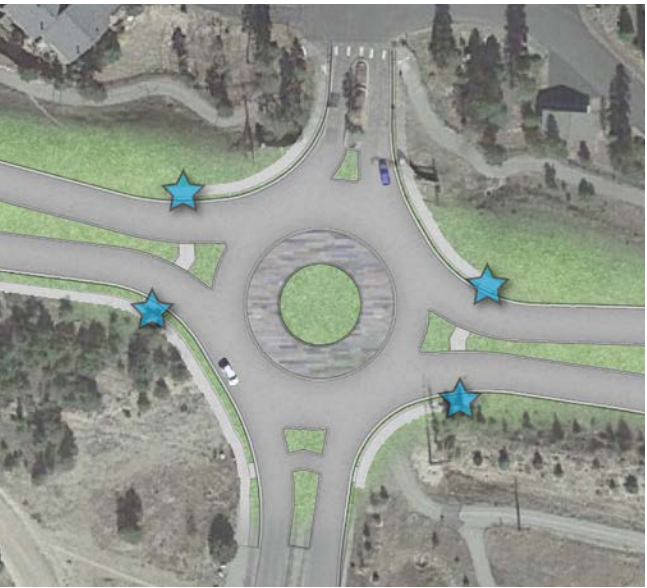
FRISCO HERITAGE THEME: OVERALL PATTERN



AMENITY DETAILS: GATEWAY AND LIGHT POLES



Gateway Locations



Banners



Lighting Fixtures



Hanging Baskets

Banners to attach to Light Poles:

- Make an impact
- Easy to read from high speed
- Change out per season
- Meet CDOT standards

Pedestrian Use:

- Promote Safe Pedestrian Crossings
- Visually signal to vehicles pedestrian presence
- Incorporate material elements from Main Street

Next Steps:

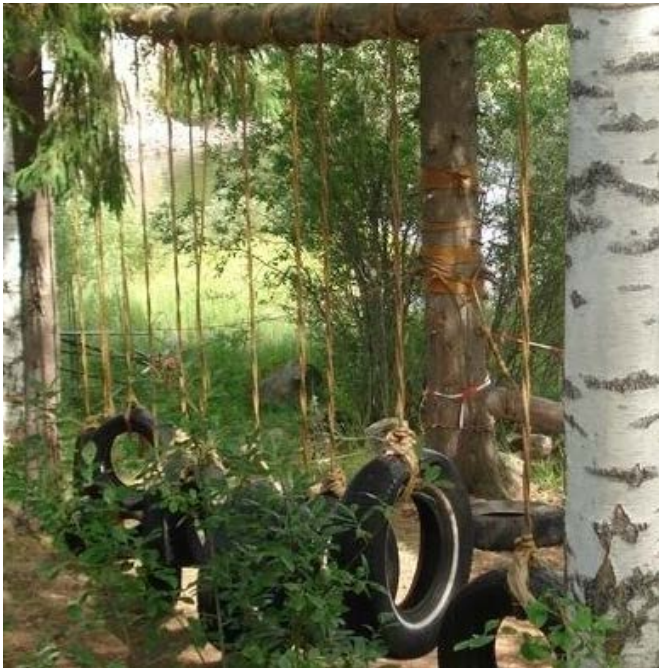
- Incorporate Council feedback
- Further develop one Concept for the Medians and Roundabouts
- Incorporate budget feedback and goals into final Conceptual Design



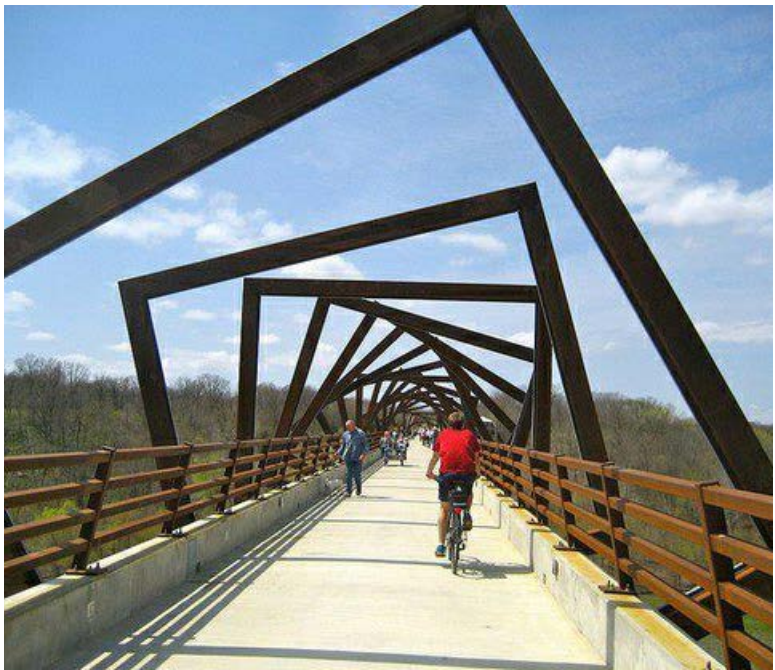
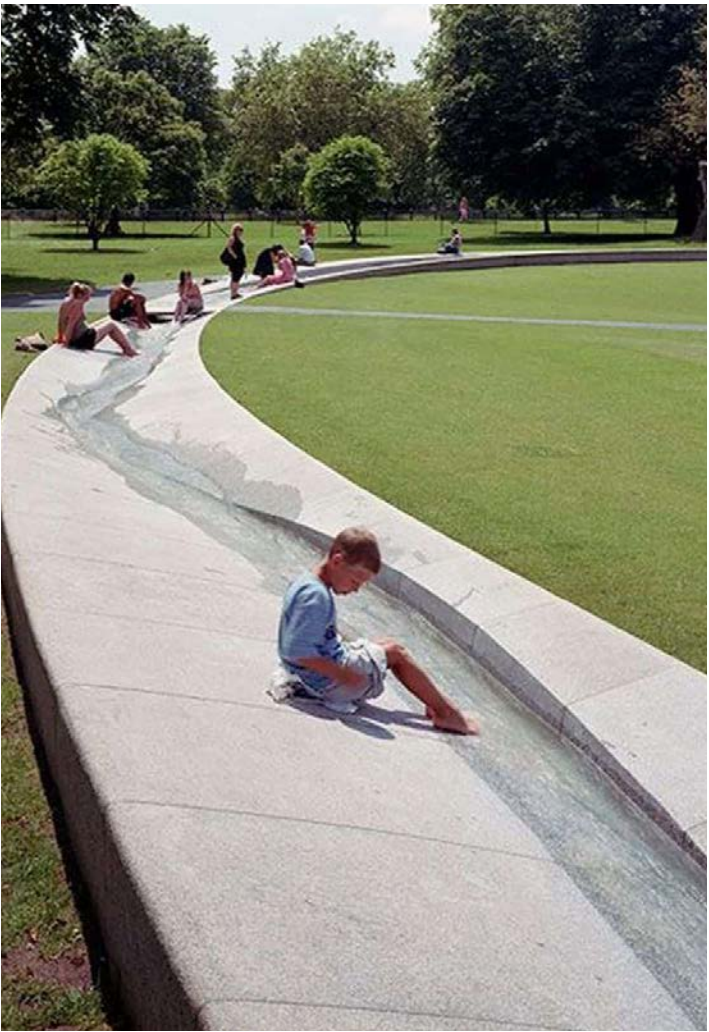
FRISCO MAIN STREET - TRIANGLE PARK



PARKS CHARACTER IMAGERY

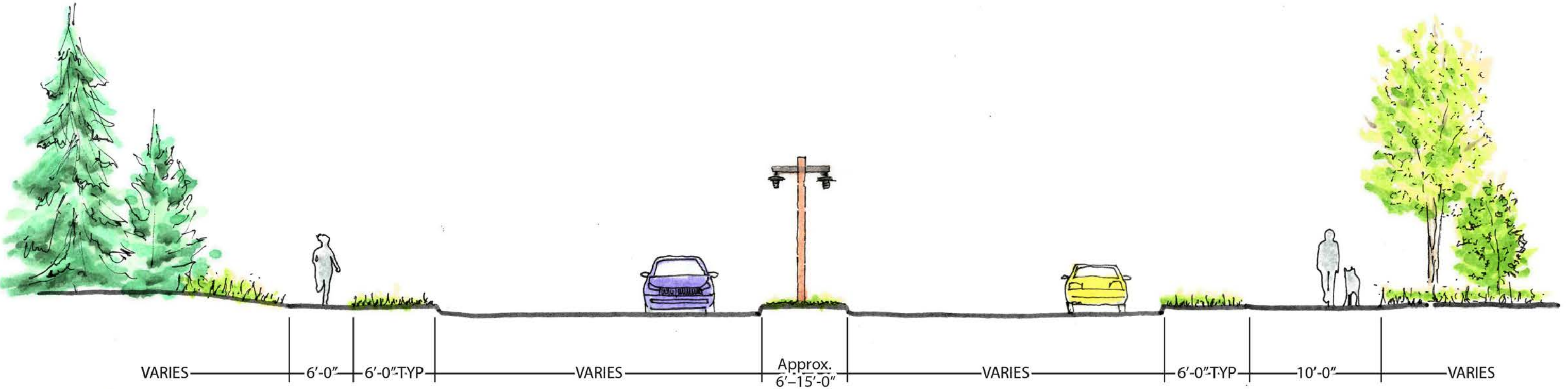


PUBLIC ART CHARACTER IMAGERY



STREETSCAPE : TYPICAL SECTION

For reference only



INTRODUCTION

Council priorities for Highway 9 Roundabouts and Medians

What we heard:

Create concepts that welcome people to the Town of Frisco and support Frisco's unique identity.

- Create a progression of improvements that increase with intensity as you near the center of town
- Define areas for possible public art
- Highlight key intersections and roundabouts
- Incorporate elements and materials used along Main Street in concepts
- Be conscientious of water use and maintenance methods
- Meet CDOT safety standards



ENERGY USE GOALS:

- Consider maintenance for medians
- Limit areas of irrigation / perennials and annuals to be closer to town
- Limit lighting to be closer to town center

