

**NEILS LUNCEFORD**  
LANDSCAPE ARCHITECTURE AND CONSTRUCTION  
981 ADAMS AVE.  
PO BOX 2130  
SILVERTHORNE, CO 80498  
TEL: (970) 468-0340  
[www.neilslunceford.com](http://www.neilslunceford.com)

**HAMBRIGHT RESIDENCE**  
317 GRANITE STREET UNIT #5&6  
GRANITE SQUARE TOWNHOMES, FRISCO, CO

SUE DATES:  
/18/2023

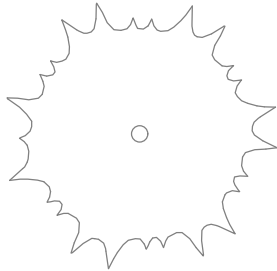
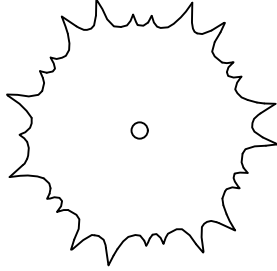
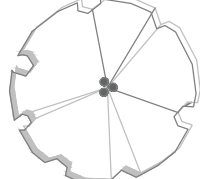
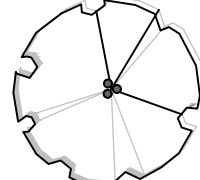
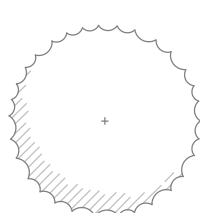
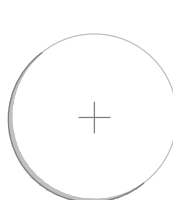
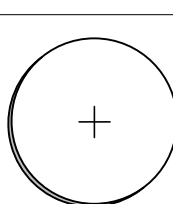
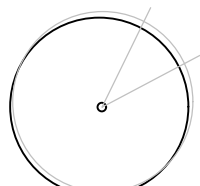

NOTES:

SIGNED:  
AWN: JR  
ECKED:

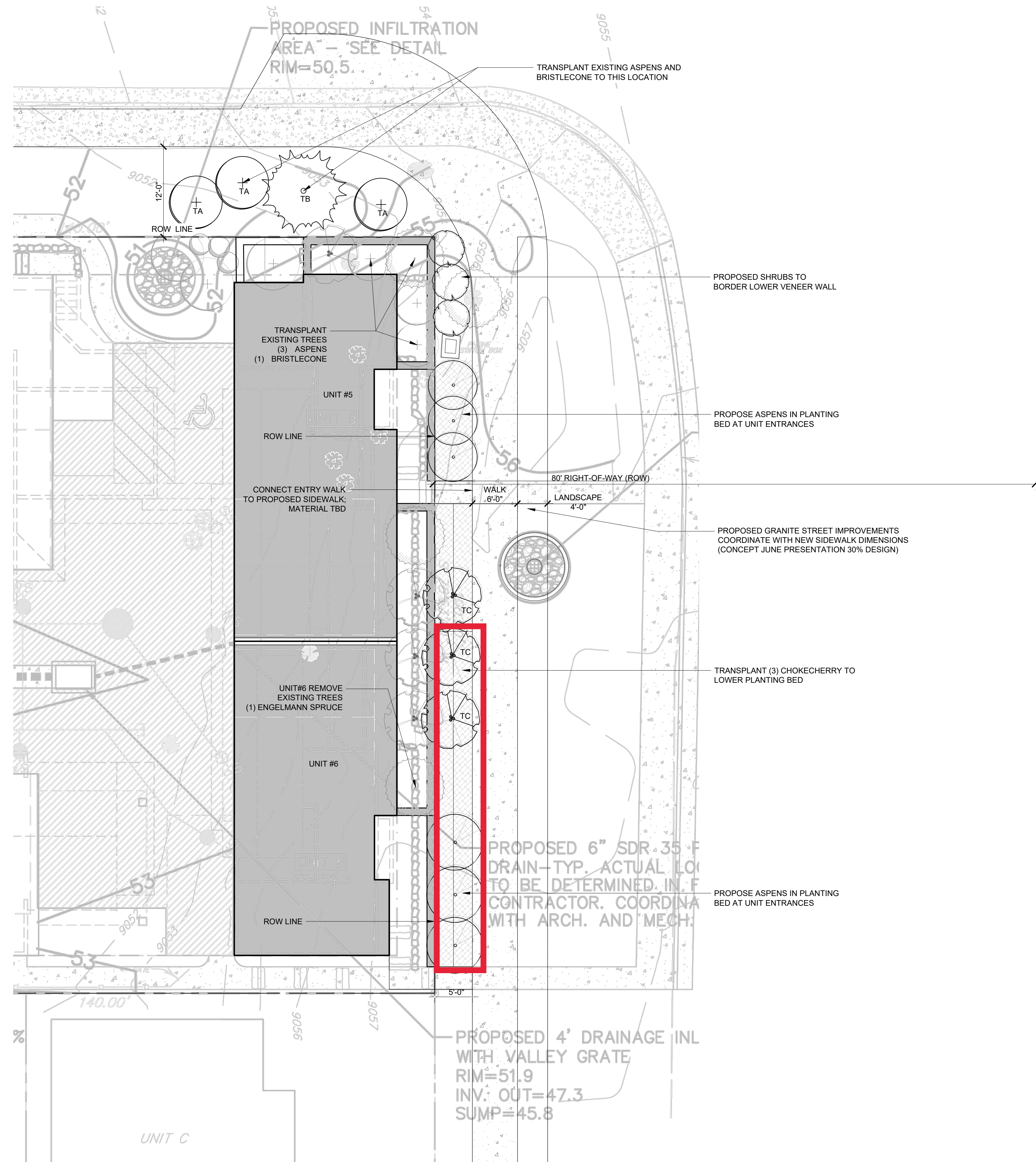
LANDSCAPE PLAN

HEET NUMBER

1

SYM	BOTANICAL/COMMON NAME	QTY	SIZE
	PINUS ARISTATA BRISTLECONE PINE (EXISTING)	1	
	PINUS ARISTATA BRISTLECONE PINE (TRANSPLANTED)	1	
	PRUNUS VIRGINIANA 'SCHUBERT' SCHUBERT CHOKECHERRY (EXISTING)	4	
	PRUNUS VIRGINIANA 'SCHUBERT' SCHUBERT CHOKECHERRY (TRANSPLANTED)	3	
	PICEA ENGLEMANII ENGLEMAN SPRUCE (EXISTING)	2	
	POPULUS TREMULOIDES QUAKING ASPEN (EXISTING)	5	
	POPULUS TREMULOIDES QUAKING ASPEN (TRANSPLANTED)	2	2" CAL
	POPULUS TREMULOIDES QUAKING ASPEN (PROPOSED)	6	2" CAL
	WOODS ROSE ROSA WOODSII	3	#5

LICENSE AREA



LANDSCAPE PLAN PHASE 1 (2023 OPTA)

