

EARLY CHILDHOOD OPTIONS

Frisco Town Council
April 2025

CATHERINE SCHAAF, EXECUTIVE DIRECTOR





AGENDA

ECO Overview

State and federal funding landscape

Local funding landscape

Short-term funding discussions

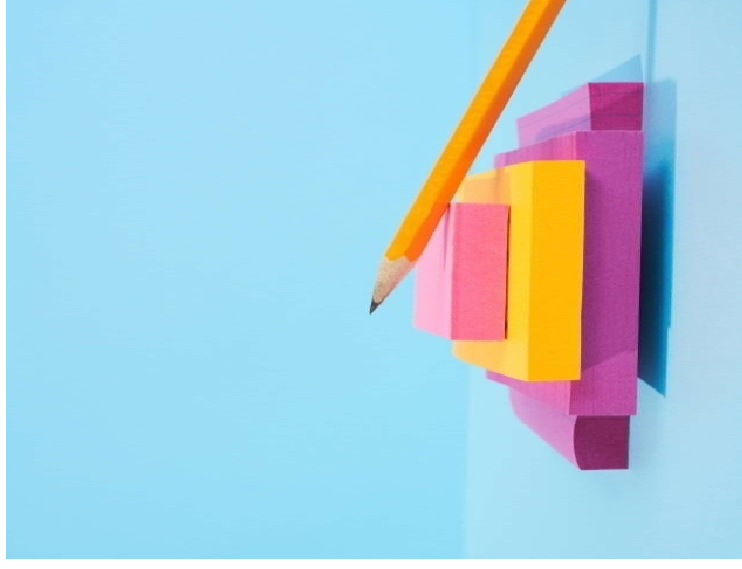
2025 – 2026 Applications

Next Steps

ECO OVERVIEW



- Improving the quality, availability and affordability of early childhood education in Summit County
 - Head Start 0-5
 - Quality Initiatives
 - Tuition Assistance
- Currently 13 FTE
- For every dollar invested in Early Childhood has a ROI of \$17
- 80% of brain development occurs within the first three years of a child's life



STATE AND FEDERAL FUNDING LANDSCAPE

CCCAP

Currently serving 106 children

Total funding: \$517,447

- Currently on a freeze
- State funding unclear at this time
- Current SPK guidelines do not account for CCCAP's inability to determine eligibility for assistance

HEAD START

Currently serving 25 EHS children and 35 HS

Children. Two separate grants with SCG and Clayton
(11 EHS children)
Total funding: \$1.1. million for 2025

- Funded through October by continuing resolution passed earlier this month
- Future applications that promote or take part in DEI initiatives will not be approved
- County staff providing additional support during Head Start Director transition

UNIVERSAL PRE-K

Currently serving 205 children

Total funding: PY 23.24: \$1.2 million

- State funding increases for provider rates due in July. Currently \$631/ 15 hrs programming a week
- Any changes will not be seen until at least July

LOCAL FUNDING LANDSCAPE

SPK

Currently serving 282 children

Total funding SEPT 24-MARCH 25: \$1.3 million

- Live and/or work Summit County
- Income cap \$250,000
- One parent must work in Summit County
- Program goals to support school readiness for 3- and 4-year-olds
- Self employed must maintain an average income that exceeds their business expenses as well as verified business license in Summit County

FIRST STEPS

Currently serving 218 children

Total funding: SEPT 24-MARCH 25: \$902,631

- Live and/or work Summit County
- Income cap \$210,000
- Assets do not exceed \$225,000
- Program goal to support working families of children aged 0-3
- Self employed must maintain an average income that exceeds their business expenses as well as verified business license in Summit County

SCTA COMMITTEE

Review and Make Recommendations for Program Policies

- Build deep understanding of how all subsidy programs work together
- Stakeholders from all sides of the puzzle
- Dive into budget complexities and understanding to have sustainability for families that access child care in Summit County
- Utilizing all levers possible with a thoughtful progression for stacking of funds

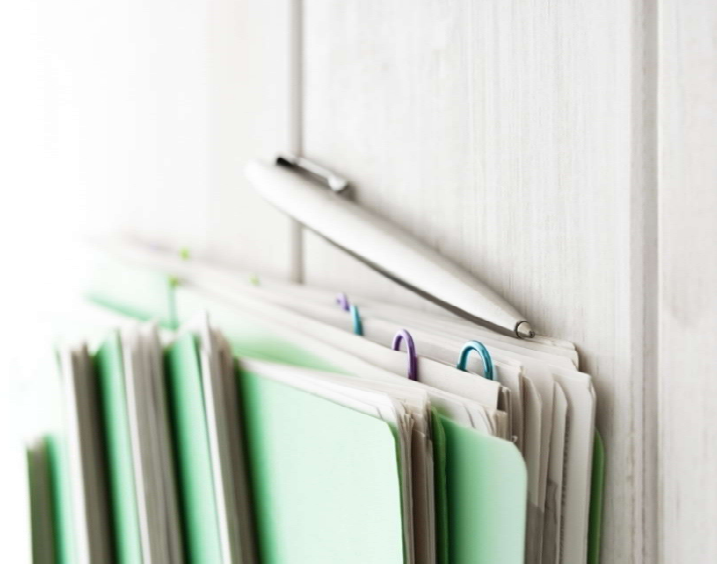


2025 – 2026 APPLICATIONS FOR FIRST STEPS AND SPK

Applications open on May 1 and are available online or in-person

Application assistance includes:

- Bilingual support
- One-on-one facilitation for those without access to a computer
- ECO staff member providing support at each large/ small center for FAQ
- Road Map on ECO website for families to determine what program to apply for



NEXT STEPS

Continue working with the Summit County Tuition Assistance Committee to identify needs and possible solutions

RFP for Summit County Child Care Mapping Project for future years

Continue discussions with County and towns about how to prioritize funds as needs increases and/or shift while keeping state and federal changes in mind

2025 Town of Frisco contribution: est \$325K; 15% of First Steps Budget.





THANK YOU

Catherine Schaaf

catherine@earlychildhoodoptions.org

www.earlychildhoodoptions.org