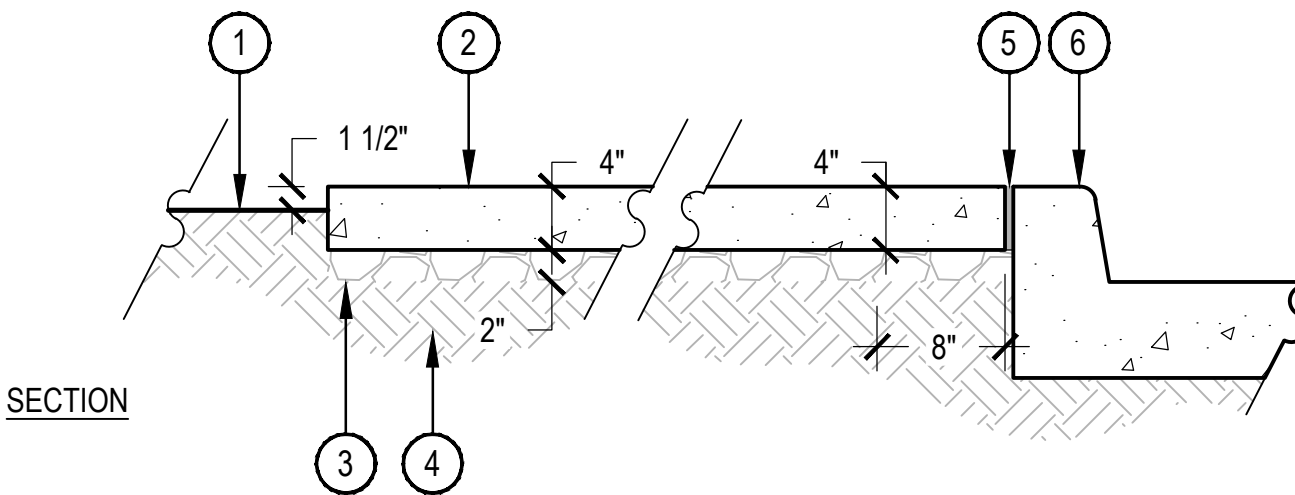


- NOTES:
1. CAST IN PLACE CONCRETE PER PLANS AND SPECIFICATIONS.
  2. CONTROL JOINTS SHALL BE SPACED 8' ON CENTER. ALIGN CONTROL JOINTS WITH CORNERS WHERE POSSIBLE.
  3. EXPANSION JOINTS EVERY 12' ON CENTER MAXIMUM, BETWEEN SEPARATE POURS, OR WHERE NOTED. SPACE JOINTS EQUALLY.

- 1 CONCRETE PAVING FINISH AS NOTED ON PLANS
- 2 FIBER EXPANSION JOINT W/ TRAFFIC SEALANT
- 3 SAW CUT JOINT, 1/8" x 2" DEPTH. DRY CUT JOINT TO AVOID SPALLING. JOINTS SHALL BE CUT BETWEEN 24-48 HOURS OF INSTALLATION
- 4 1/4" RADIUS TOOL EDGE
- 5 FINISHED GRADE OF LANDSCAPE AREA. BACKFILL AFTER FORM REMOVAL.
- 6 COMPACTED SUBGRADE, 95% STANDARD PROCTOR DENSITY - SEE GEOTECHNICAL REPORT FOR FURTHER INFORMATION
- 7 1/8" RADIUS

## 1 CONCRETE JOINT

SCALE: 3" = 1'-0"

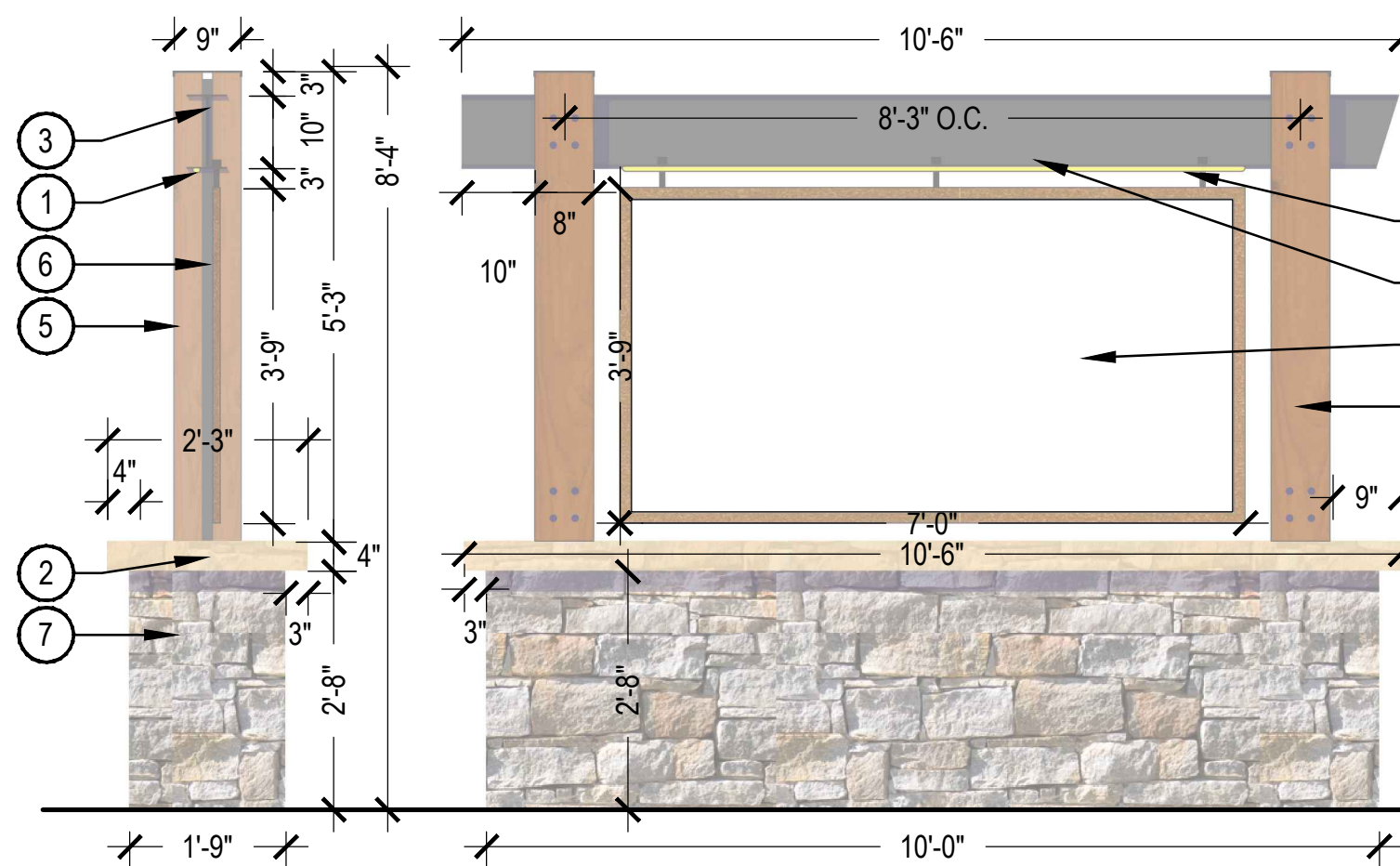


- NOTES:
1. PROVIDE A 25 SF MOCK-UP OF CONCRETE PAVING FOR EACH FINISH SPECIFIED. MOCK-UP SHALL INCLUDE CONTROL JOINTS. MOCK-UP NOT REQUIRED FOR STANDARD BROOM FINISH.
  2. ALL CONCRETE SHALL HAVE A MINIMUM COMPRESSIVE STRENGTH OF 4,500 PSI AT 28 DAYS.
  3. EXPANSION JOINTS AT 200' ON CENTER MAXIMUM OR BETWEEN SEPARATE POURS.
  4. CONTROL JOINTS EVERY 8' ON CENTER MAXIMUM.

- 1 ADJACENT LANDSCAPE, REFER TO LANDSCAPE PLANS
- 2 4" CONCRETE SLAB, REFER TO PLANS FOR LOCATION, MATERIAL TYPE AND DIMENSIONS, REFER TO MATERIAL SCHEDULE SHEET L-002 FOR FINISH
- 3 AGGREGATE BASE, SEE TYPICAL SECTION, DETAIL 5, SHEET L-502
- 4 SUBGRADE COMPACTED TO 95% STANDARD PROCTOR DENSITY
- 5 EXPANSION JOINT; SEE TYPICAL SECTION, DETAIL 1, SHEET L-506
- 6 ADJACENT PAVING OR CURB, FLUSH WITH CONCRETE PAVING, REFER TO HARDSCAPE PLANS

## 2 CONCRETE PAVING

SCALE: 1" = 1'-0"



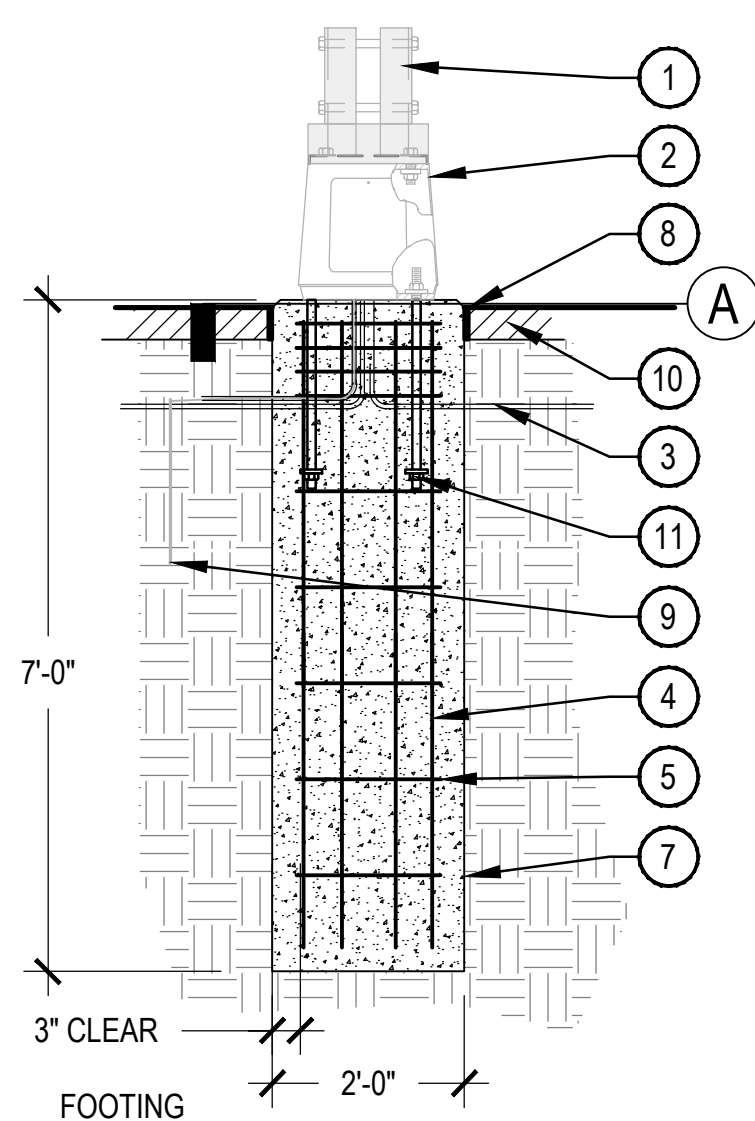
- NOTES:
1. DETAIL PROVIDED FOR DESIGN INTENT ONLY. FINAL SIGN DESIGN AND STRUCTURE TO BE COMPLETED BY A SIGN FABRICATOR AND LICENSED STRUCTURAL ENGINEER. CONTRACTOR TO PROVIDE COMPLETED SHOP DRAWINGS WITH NECESSARY STRUCTURAL AND ELECTRICAL STAMPS PER JURISDICTIONAL REQUIREMENTS FOR REVIEW BY OWNERS REPRESENTATIVE BEFORE CONSTRUCTION.
  2. ALL LIGHTING TO BE FULL CUT OFF, DARK SKY COMPLIANT, AND WARM 2800-3200K LED.
  3. SIGN LETTERING TO BE INTERCHANGEABLE. SIGN FABRICATOR TO DESIGN AN DISCRETE SYSTEM FOR CHANGING THE SIGN MESSAGE AS NEEDED.

## 3 CONCEPTUAL ENTRY SIGN

SCALE: 1/2" = 1'-0"

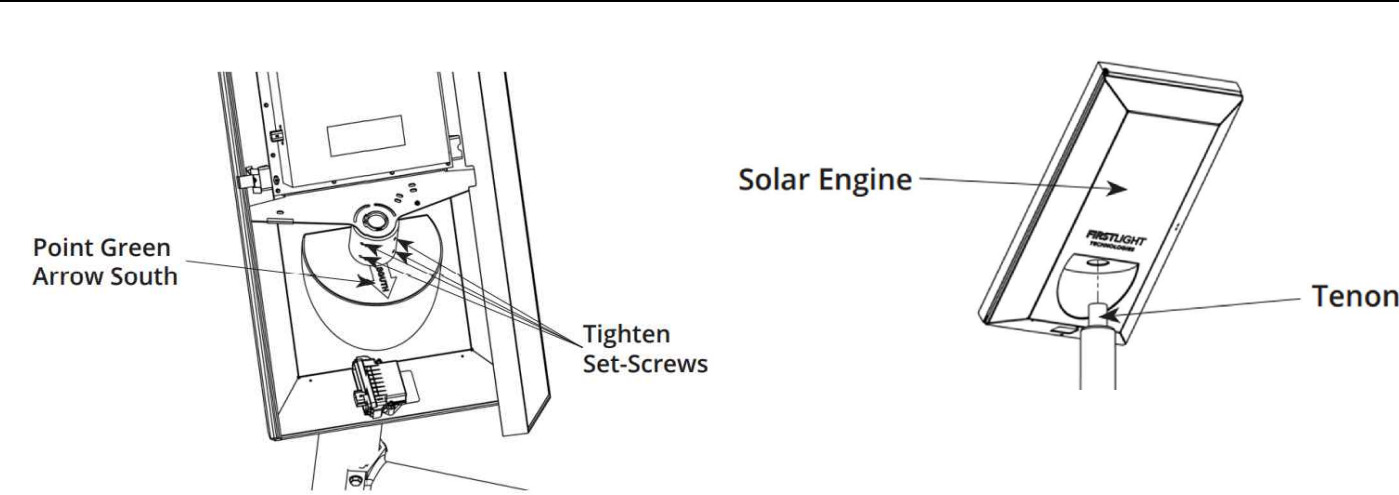
## 4 FRISCO LIGHT POLE

- 1 LED STRIPE LIGHT, LIGHT TO BE ATTACHED TO BOTTOM OF I-BEAM. WIRING TO BE HIDDEN.
- 2 4" THICK SILOAM STONE CAP
- 3 10" I BEAM, POWDER COAT BLACK
- 4 INTERCHANGEABLE SIGN PANEL OR POSTER BY TOWN, SIGN CONTRACTOR TO PROVIDE NECESSARY MOUNTING HARDWARE AND CONNECTIONS
- 5 4X8 CEDAR POST WITH STEEL STRUCTURAL CORE MATCHING FRISCO STREET LIGHTS, STAIN TO MATCH TOWN OF FRISCO STANDARD. CEDAR POST TO HAVE METAL CAP, POWDER COAT BLACK TO MATCH.
- 6 "CORTEN" LOOK POWDER COATED METAL SIGN FRAME TO BE HUNG FROM I-BEAM
- 7 THIN VENEER SILOAM STONE PODIUM, INTERNAL STRUCTURE AND FOOTING TO BE DESIGNED BY THE SIGN CONTRACTOR.

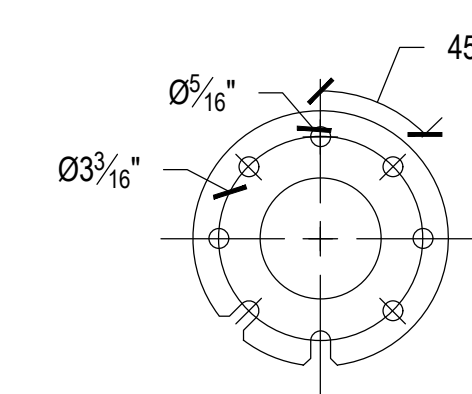


## 5 LIGHT POLE FOOTING

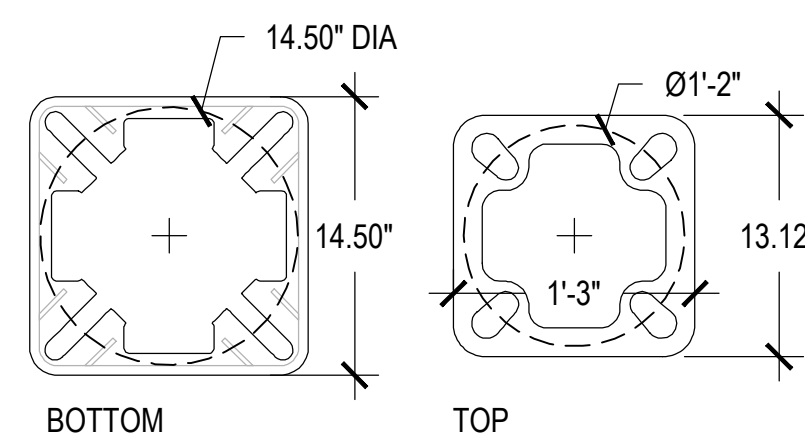
SCALE: 1/2" = 1'-0"



- FIRST LIGHT SOLAR ENGINE MOUNTING:  
SCALE: NTS
1. INSTALL PER MANUFACTURER SPECIFICATIONS.
  2. ROUTE WIRING THROUGH THE TENON AND DOWN INTO THE TOP OF THE FIXTURE THROUGH THE FLANGE.



- FIRST LIGHT BELL LIGHT MOUNTING PATTERN:  
SCALE: 1 1/2" = 1'-0"
1. INSTALL PER MANUFACTURER SPECIFICATIONS.



- BREAKAWAY BASE BOLT PATTERS:  
SCALE: 1" = 1'-0"
- VALMONT STRUCTURES  
BREAKAWAY TRANSFORMER BASE  
ALUMINUM TB1-17, BLACK

5. LIGHT POLE, LIGHTS AND SOLAR SYSTEM MUST NOT EXCEED 950 LBS PER BREAK AWAY BASE MAXIMUM LOAD SPECIFICATIONS.
6. LIGHT POLE DESIGN FOR BREAKAWAY BASE DOES NOT INCLUDED ADDITIONAL FLAGS, BANNERS AND OR HANGING BASKETS. ANY ADDITION TO THE FLAG POLE MAY EXCEED THE DESIGN SPECIFICATION OF THE BASE AND IS NOT APPROVED.
2. CONTACT REPRESENTATIVE FOR DETAILS ON LIGHT FIXTURES AND SOLAR PANEL MODULE
- 2.1. REPRESENTATIVE: CHRIS DAVIS, THE LIGHTING AGENCY, 303.455.1012, cdavis@thelightingagency.com

- 1 FIRST LIGHT TECHNOLOGIES SOLAR CELL, MOUNT SOLAR PANNEL TO FACE SOUTH.
- 2 SOLAR ENGINE TENON Y MOUNT, 2-3/8" PIPE, EX TENON MUST EXTEND 7" BEYOND TOP OF POST CAP AND BE ALLOWED TO SWIVEL TO ALIGN SOLAR PANELS TO FACE SOUTH.
- 3 8"x10" - 3/4" THICK STEEL TENON SUPPORT PLATE WITH CENTERED 2.5" DIAMETER HOLE, WELD TO TOP OF STEEL CORE,
- 4 9" C CHANNEL WELDED TO 3"x5" CORE, CUT ENDS OF CHANNEL AT 60 DEGREES
- 5 ELECTRICAL JUNCTION BOX AND LIGHT MOUNT, REFER TO BELL LIGHT MANUFACTURER FOR SPECIFICATIONS, CONFIRM MOUNTING PATTERN BEFORE FABRICATION
- 6 ADD ALTERNATE: ELECTRICAL JUNCTION BOX WITH GFI OUTLETS FOR SEASONAL LIGHTING
- 7 FIRST LIGHT TECHNOLOGIES BELL LIGHT, BFL-B, BLACK, 09 LIGHTING PROFILE 3000K, TYPE 4 OPTICS.
- 8 4"x 8" CEDAR POST, STAIN TO MATCH EXISTING TOWN STANDARD
- 9 STEEL CORE, 3"x5" 1/4" THICK STEEL TUBE, BLACK POWDER COAT, PRE-PUNCH HOLES FOR ELECTRICAL OUTLETS AND BOLT LOCATIONS
- 10 1" THICK GALVANIZED BOLTS WITH WASHERS PAINTED BLACK, 19" ABOVE BASE, 2'-3" O.C. X 6, 16", BOLTS SHALL BE RECESSED FLUSH WITH SURFACE
- 11 3/16" STEEL PLATE, WRAP ON THREE SIDES, BLACK POWDER COAT, (4) 1" BOLTS
- 12 1" THICK GALVANIZED BOLTS PAINTED BLACK, 4 BLOTS
- 13 13.12" SQ x 5" - 1/16" THICK STEEL BASE CAP, BLACK POWDER COAT
- 14 13" SQ - 1.25" THICK PLATE STEEL BASE PLATE, MATCH BOLT HOLE PATTERN WITH BRAKEAWAY TRANSFORMER BASE, WELD TO STEEL CORE - #4 AND WRAP - #11 TO BASE PLATE
- 15 VALMONT STRUCTURES; BREAKAWAY TRANSFORMER BASE ALUMINUM TB1-17, BLACK
- 16 LIGHT POST FOOTING, DETAIL 5/ L-506
- 17 2" BLACK METAL POST CAP

DATE:

02/24/23: CDOT.PRMT  
03/08/23: BID SET  
05/23/2023: IFC

SHEET TITLE:  
LANDSCAPE  
DETAILS

L-506